



WILLIAMSTOWN
SAILING CLUB

PO Box 50
Williamstown VIC 3016
Reg. No. A803
ABN: 87 945 070 751

Club House
The Strand
Williamstown VIC 3016
T: (03) 9397 6987

www.williamstownsailingclub.org.au

Safe launch and retrieval of Rigid Hull Inflatable Boats (RHIBs)

1. Objective

To ensure the personal safety of those directly engaged with launch/retrieval as well as bystanders during activities involving movement of vehicles.

To provide personnel who assist with the launch and retrieval of Rigid Hull Inflatable Boats (RHIBs), with instructions to avoid damage to boat during launching and retrieval.

2. Scope

To detail the correct RHIB release/retrieval methodology to ensure boat is not released prematurely causing damage by dropping off trailer onto ramp, or otherwise being damaged by collision with competitor's boat whilst waiting for retrieval at the end of the day.

3. RHIB safe launch requirements



Secondary release cord

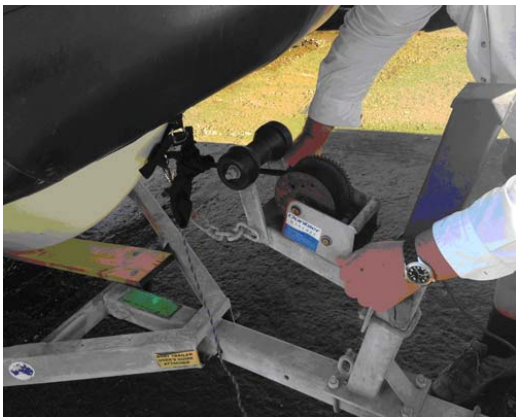
- Whilst RHIB is on deck, ensure winch pawl is engaged and retrieval strap hook through towing bridge on bow of boat is under tension.
- Secondary release pin cord must be freely dangling i.e. not entangled nor restrained by trailer.
- Periodically check motor oil level.
- Disengage battery isolator switch.
- Check sufficient fuel reading from gauge for day's events.
- Check bungs (3 off) are closed and motor is raised.



- Couple trailer to tow vehicle ensuring latch has engaged under tow-ball, this can be confirmed by gentle upwards tug on draw-bar or a visual check from beneath.
- Ensure trailer braking system is disengaged.
- Connect safety chain between trailer and tow-vehicle.

Be aware

- Before craft/equipment are moved in anyway ensure that the surrounding area is clear and that **all** persons are aware of what is about to happen.
- Appoint a 'spotter' person to oversee proceedings.
- Move trailer to boat ramp.
- Ensure stern of RHIB is over the water before proceeding with release.
- Place chock behind back wheel of tow vehicle, driver must stay in vehicle with hand-brake and foot brake applied before person places chock.
- Driver of tow-vehicle must remain inside vehicle whilst on the ramp.



- When winch is disengaged to wind back to second release, do not let the winch handle go and be aware of the boat weight on the handle. If operator lets go handle, this then allows the boat to roll down the trailer to be caught by the second release with a thud. This puts excessive pressure on the boat tow- ring fitting, also the secondary release is not load rated.
- Disengage winch pawl and let boat descend slowly until held on trailer by secondary release safety chain.
- Boat now held on trailer by secondary restraint chain.

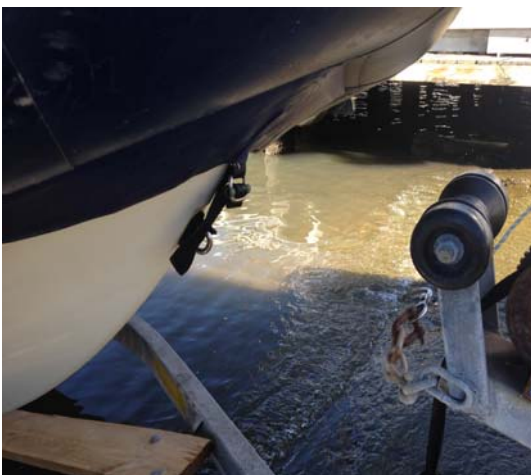




- Remove chock and immerse trailer deeper into water before replacing chock behind rear wheel of tow-vehicle.
- This further immersing ensures RHIB transom wont strike bottom and also reduces incidence of water ingress as RHIB drops off trailer.



- Secondary release pin cord can now be tugged to release RHIB, ensure pin is tugged from correct direction with the ring on the pin facing the operator to reduce chance of release mechanism damage.



- Secondary release cord released, RHIB is now free to glide into water secured only by person controlling launching line.
- Vehicle chock can now be removed and trailer towed clear of water, then hosed down before being parked until further required.
- Move RHIB to jetty and moor so as breeze blows craft away from jetty.

4. RHIB safe retrieval requirements



- All rescue craft to use northern jetty to segregate from member's boats.
- This precaution is to reduce chance for collisions.
- Tow-vehicle to immerse trailer in preparation for retrieval.
- Chock rear wheel of tow-vehicle once in position.



- Retrieval strap hooked onto towing bridge fitting on bow of RHIB.



- Guide RHIB onto trailer so as to be in alignment with rollers.



- Winch RHIB up onto rollers to full extent of travel.



- Ensure winch pawl is left engaged with winch gear to prevent RHIB moving backwards on trailer during recovery up ramp.
- Reconnect secondary restraint fitting.
- Remove wheel chock prior to giving the all clear to tow vehicle -driver to retrieve RHIB from boat ramp back onto deck.

Additional packing up tasks includes the following:

- Wash down of RHIB after ensuring drain cocks are opened.
- Wash down of trailer including inside of the channel framework.
- Running motor with flushing muffs and hose in place until thermostat opens ensuring purging of salt water.
- Ensure that the battery isolator switch is engaged.
- Return RHIB keys to key hook and the emergency equipment grab bag to correct tub both located in Sailing Locker.
- Cover RHIB with correct cover following guidance marked on covers.
- Replace trailer lock to deter theft.
- Boat operator must report any damage or maintenance requirements to Rear Commodore or his/her agent for priority assessment and/or inclusion on maintenance list.